

AZAROV S

Działka 5380

AZAROV S



Działka 5380 |

Projekt willi w Ospedaletti 600 mkw

SPRZEDAŻ / WYNAJEM
VENDITE

PIĘTRO
1/2

CENA
€ 1.500.000

KWADRAT
600 M²

KLASA ENERGETYCZNA
A : 111,78 KWH/M²A

OGRZEWANIE
AUTONOMO

SYPIALNIE
4

ZOBACZ NA STRONIE

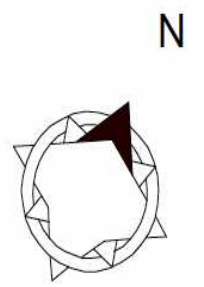
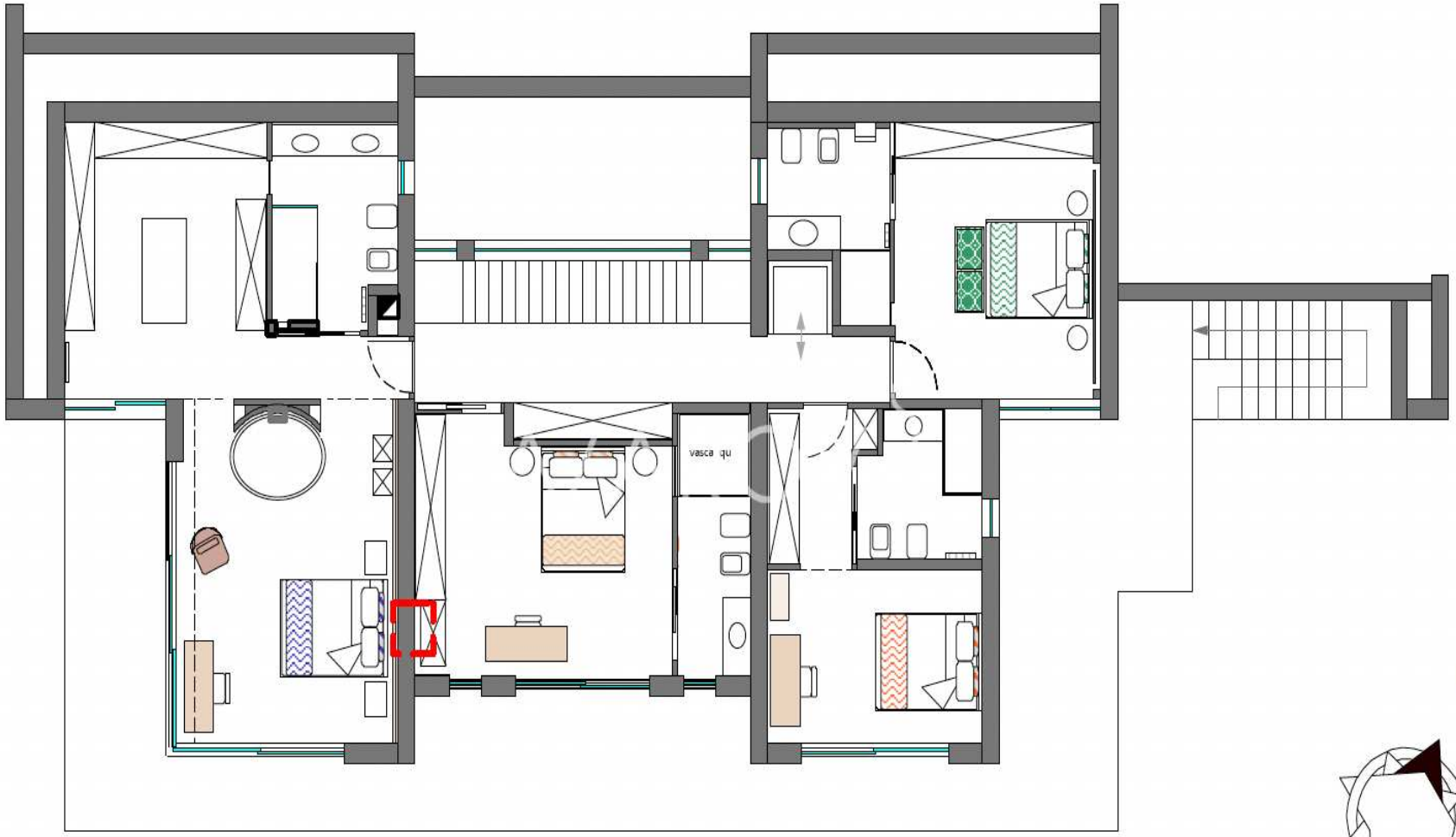
ŁAZIENKI
5

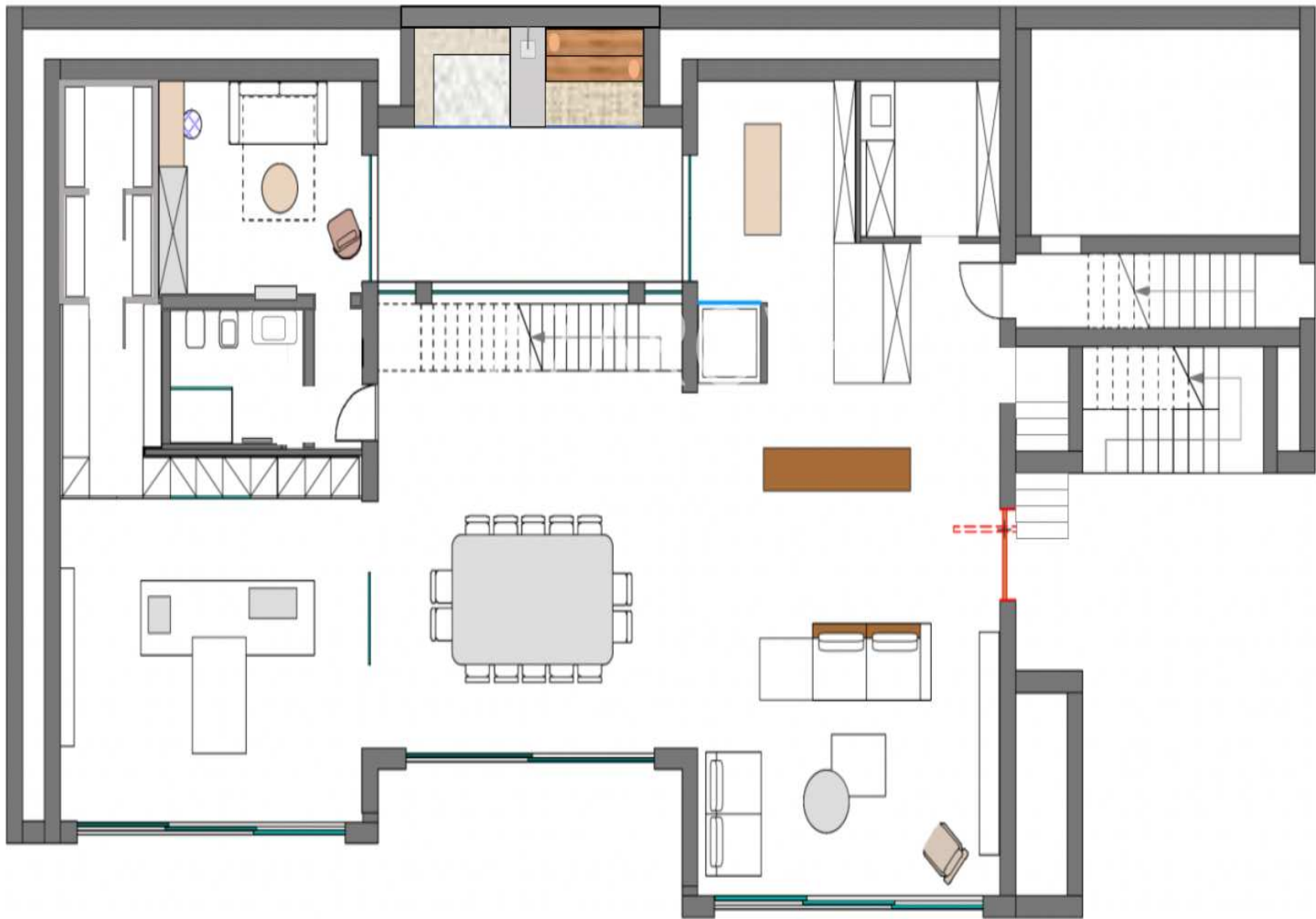
BLIŻSZE DANE

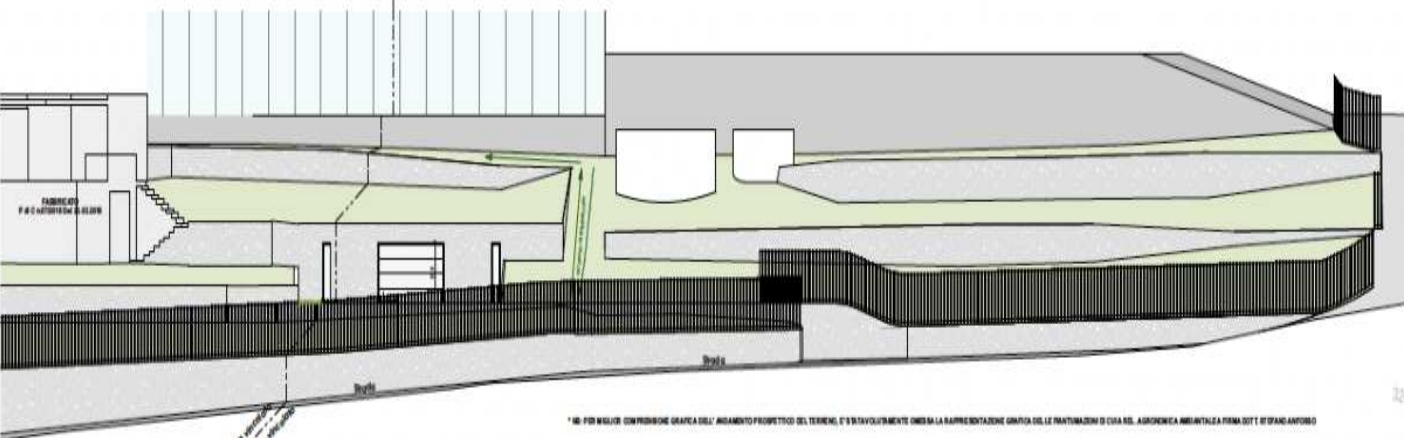
Sygnalizacja, Klimatyzacja, Wbudowane szafy, Winda, Kąpiel, Balkon, Bar, Kebaby, grill, Piwnica, Kabina prysznicowa, Garaż, Ogród, Internet, siłownia, Basen, Parking, Taras, Widok morza, widok na góry

AZAROV S







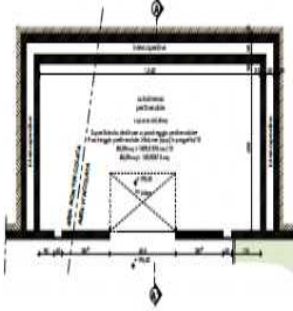


* NB: PER MIGLIOR COMPRESIONE GRAFICA DELL'ANDAMENTO PROSPETTICO DEL TERRENO, E' STATO VOLUNTARIAMENTE OMESSA LA RAPPRESENTAZIONE GRAFICA DELLE PANTUFOLAZIONI DI CUIA DEL SUOLO, A DIMOSTRAZIONE AMBIENTALE PRIMA DEL TITOLO ANTIFORO

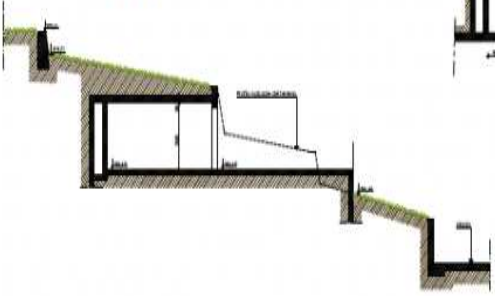
TABELLA VEGETAZIONALE

 Fritillaria	 Lantana	 Rosmarino	 Musa
 Bugmansia arborea	 bordura	 Rosmarino	 Paradisiac
 Echium	 Phlox	 Bambus	
 bordura	 Antropurpureum	 Rosario	
 Aqumela	 Rosa	 Olea	
 Orto	 Olea		

PIANTA BOX AUTO



SEZIONE PAESAGGISTICA scala 1/100



PLANIMETRIA GENERALE scala 1/200



Legenda

-  linea area vincolata
-  confini catastali
-  1700 msp poli catastali
-  fabbricati
-  confine idrico



AZAROV S

azarovs.pl a@azarovs.ru

SAN REMO

Corso Imperatrice 8

+39 0184639032 +39 3884227146